



**WACKER  
NEUSON**  
*all it takes!*

# Mini-excavators

up to 6 ton



## Productivity at its best

Every construction site is different. That's why Wacker Neuson offers a wide selection of mini excavators, ranging from one to six-tons, to fit the job. The rugged and reliable machines offer excellent breakout force for the toughest conditions and provide the power, maneuverability and stability to get the job done in less time and effort.

The track models, with or without rear projection, are easy to operate and offer spacious cabs, ergonomic controls and excellent all-around visibility. Each machine is designed with purpose and precision to ensure you have what you need to manage any situation. Whatever you need to do; dig, backfill or move material, Wacker Neuson has the right excavator to efficiently accomplish the task at hand.



## Wacker Neuson- all it takes!

No matter what challenges you face, Wacker Neuson has all it takes. We offer customers across the globe a comprehensive range of equipment designed for applications across construction, landscape, agriculture, industrial and municipal industries. In addition to our excavators, our diverse range of products includes concrete technology, compaction equipment, light towers, generators, pumps, heaters, skid steers, compact and utility track loaders, wheel loaders, telehandlers and dumpers. Wacker Neuson products are sold, rented and serviced by a quality dealer network near you.



**Find a Dealer**



**wackerneuson.com**

# Contents

## Conventional Tracked Excavators

803 Dual Power	4
ET20	12
ET42	26
ET58	26

## Tracked Zero Tail Excavators\*

EZ17	8
EZ26	16
EZ36	22
EZ50	26

## Configurations

34

## Technical Data

36

\* We define Zero Tail to be excavators with a minimal rear projection or none at all.





## The smallest with emission-free capabilities: 803 mini-excavator.

	803
Shipping weight (lb)	2,182–2,396
Max. digging depth (in)	69.5
Engine output (hp)	15.4

## Extending your options: 803 Dual Power tracked excavator.



### Dual Power – Emission-free Operation

As an option to the on-board diesel engine, the 803 excavator can be operated via an electro-hydraulic power unit. Simply connect the HPU8 and continue working with the same performance. This allows flexibility for various work situations and increases the range of applications in enclosed spaces and urban areas. To carry the power unit (HPU) to the job site, simply attach it to the dozer blade of the excavator.



### Fold-down ROPS

The Roll-Over-Protection-Structure (ROPS) serves as protection for the operator. For low clearance heights or for easier transportation of the machine, the ROPS bar can be easily folded down toward the front of the machine.



### Standard Auxiliary Hydraulics

The standard one-way auxiliary hydraulics offers more flexibility for breaker operation. It can also be converted to two-way auxiliary hydraulics for swing bucket applications. The 803 excavator is ideal for demolition and renovation work in confined spaces.



### Class-leading Engine Performance

Designed for excavating professionals, the 803 features a proven 3-cylinder diesel engine that is an efficient, economical and reliable powerhouse.

## | Safety

- Front debris guard (optional)
- Fold-down ROPS safety bar
- Lift arm cylinder on the top side of the boom, protected against damage

## | Performance

- Auxiliary hydraulics as standard
- The highest engine performance in its class
- External hydraulic oil tank keeps oil cooler without additional cooling system

## | Maintenance

- Optimal maintenance access

## | Environmental-friendliness

- Dual Power: operation with electro-hydraulic power unit



## | Efficiency and Versatility

- Easy transport with a trailer
- Hydraulic telescopic travel gear with dozer blade extension
- Compact dimensions
- Thermal stability at ambient temperatures up to 113°F (45°C)







## Compact, powerful and maneuverable:

EZ17 zero tail mini excavator.

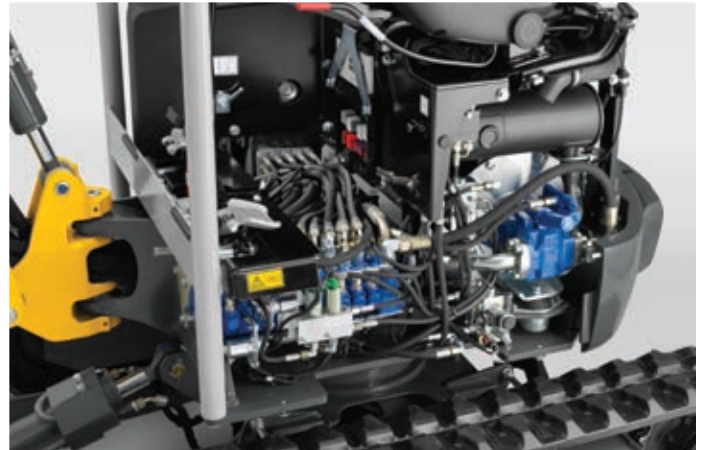
	<b>EZ17</b>
Shipping weight (lb)	3,519-4,017
Max. digging depth (in)	98.0
Engine output (hp)	17.2

## High performance and efficiency: EZ17 zero tail excavator.



### Protected Stick and Lifting Arm Cylinders

The stick and lifting arm cylinders are attached to the upper side of the boom, to reduce damage either by collision with the dozer blade or by the material being handled. This saves money and promotes safety.



### Easy Maintenance

The EZ17 is ideal for daily use, with easy and convenient maintenance access and serviceability. A 17 mm wrench is all that is required to access the most important components, right on the job site.



### Powerful Drive System with LUDV

The powerful drive system combines with a load-sensing hydraulic system (LUDV) to deliver quick working cycles, greater application flexibility, and easier control for comfortable and fatigue-free operation of the excavator. No matter what the load to be moved, the control movements on the joystick stay the same. Along with increased operating comfort, this results in high performance while reducing fuel consumption.



### Hydraulic Joystick Operation

The durable, ergonomically-designed joysticks, which work completely proportionally, expand the functions for controlling the excavator. The operator can carry out movements more accurately and work with increased precision.



## Versatility

- Two lifting points on the roof
- Additional control circuits allow for easy operation of attachments
- Canopy with roof window
- Load-holding function and optional overload valves with hose burst protection
- Telescopic undercarriage and dozer blade extension for optimal maneuverability in confined spaces

## Safety

- Optimally protected stick and lifting arm cylinders

## Performance

- Two travel speeds
- Hydraulic joystick operation
- Best stability and solid steel construction

## Maintenance

- Very easy maintenance and disassembly of the canopy and covers

## Efficiency

- Easy transport with a trailer
- 100% Zero Tail: no rear projection, ideal for work directly against walls and borders\*
- Thermal stability at ambient temperatures up to 113°F (45°C)
- Powerful drive system with LUDV

\*Counter weight adds rear projection





## Best-in-class performance: ET20 tracked mini excavator.

	<b>ET20</b>
Shipping weight (lb)	4,105–4,810
Max. digging depth (in)	105.6
Engine output (hp)	17.2

## Performance

- Two travel speeds
- Powerful diesel engine

## Maintenance

- Easy service and maintenance access

## Safety

- Laterally raised cast bumper

## Efficiency

- Two lifting points on the roof
- Powerful drive system
- Compact dimensions
- Thermal stability at ambient temperatures up to 113°F (45°C)
- Easy transport with a small trailer

## Comfort

- Doors on both sides for easy entry and exit
- Comfortable, fully enclosed operator cab with skylight for an optimal view upwards
- Innovative front windshield system
- Hydraulically controlled drive pedals for comfortable, precise control
- Hydraulic joystick operation
- Easy to disassemble canopy / cabin

## Versatility

- Hydraulic telescopic undercarriage with dozer blade extension
- Numerous attachments can be used



## Job site proven features and performance: ET20 tracked excavator.



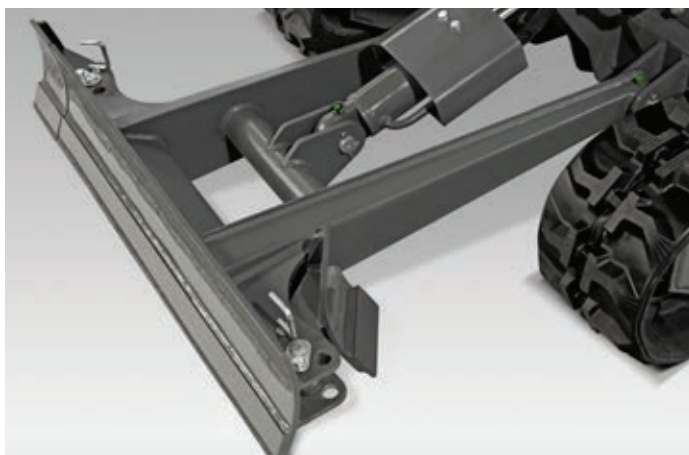
### Hydraulically Operated Pedals

The hydraulically pilot-operated throttle pedals provide comfortable and precise control without mechanical wear and allow hands to remain free for other functions. This saves time and increases operator comfort.



### Powerful Drive System

The high-performance drive system provides maximum power to the excavator at every point of operation, adding up to 30% more power for improved performance.



### Telescopic Undercarriage with Dozer Blade Extension

The hydraulically telescoping undercarriage with a maximum outer width of 51.2 inches provides stability. It can quickly be retracted to a width of 39 inches. The foldable dozer blade extension allows for convenient adjustment to job site conditions, and the extension elements are always connected to the machine to avoid loss.



### Comfortable Cab

The large, fully enclosed and tiltable cab with roof window offers the operator an optimal 360° visibility of the work area, as well as colleagues and any dangers on the job site. The cab can be easily disassembled for service and repair work, while maintaining all hydraulic functions of the excavator.







## Comfortable operation: EZ26 minimal tail swing excavator.

	<b>EZ26</b>
Shipping weight (lb)	5,467-5,952
Max. digging depth (in)	110.5
Engine output (hp)	19.6

## Quality

- Optimized hose routing for longer service life and protection from the outside
- Thermal stability enables 100% output with an ambient temperature of up to 113°F (45°C)
- Flexible cylinder rod protection remains intact after contact

## Versatility

- Two lifting points for the whole machine on the cab/canopy
- Minimal tail swing design for working next to obstacles and walls\*
- Auxiliary control circuits for equipping attachments

## Performance

- Increased performance and digging depth enhances efficiency
- LUDV hydraulic system enables easy and precise control
- Cab includes air-conditioning

## Efficiency

- Automatic idling speed reduces fuel consumption and emissions
- Easy attachment change from the cab
- Easy access to all maintenance and servicing points from the ground
- Convenient transport with a trailer



\*Counter weight adds rear projection

## Designed for job site flexibility: EZ26 minimal tail swing excavator.



### Increased performance

The EZ26 provides higher performance and digging capabilities, plus lifting strength and stability typically found in larger models.



### Minimal Tail Swing

With the compact design and exceptional maneuverability, the EZ26 can efficiently work in confined areas and can swivel without coming in contact with walls and other obstructions.



### Load Sensing

The load-sensing hydraulic system (LUDV) regulates the flow rate according to demand, providing precise control regardless of the load. This allows for fast working cycles, greater application flexibility and easier, more comfortable operation.



### Compact Design

With the compact design, the excavator can easily be taken from one job site to the next. And when working, the machine can maneuver anywhere easily and quickly, even in confined spaces, for high efficiency in every application.



### Comfort Cab and Visibility

Everything is in view and within reach thanks to the jog dial operation and large clear display. The operator has full 360° visibility around the machine and job site. Communication is optimized through the side windows, which open on both sides, as well as the two-piece front windshield.



# All it takes for the challenges you face.



803



EZ17



ET20



EZ26



EZ36



ET42



EZ50



ET58





## Compact and productive: EZ36 minimal tail swing excavator.

	<b>EZ36</b>
Shipping weight (lb)	7,782-9,801
Max. digging depth (in)	137.7
Engine output (hp)	24.4

## Comfort

- Innovative, two-part front windshield system
- Jog Dial system
- Comfortable, fully enclosed cab
- Hydraulic joystick operation
- Hydraulically controlled drive pedals
- Powerful air-conditioning system
- Radio with Bluetooth (optional)
- USB port

## Efficiency

- Optimized drive concept
- Thermal stability with ambient temperature up to 113°F (45°C)
- Minimal tail swing design
- Transport on trailer
- Compact dimensions

## Maintenance

- Easy service and maintenance access
- Tilttable and detachable cab
- Dirt-repellent travel gear

## Safety

- Eight tie-downs
- Enhanced stability due to the externally guided rollers and additional rear counter weight
- Flexible cylinder rod protection

## Versatility

- ISO/SAE control pattern changeover valve
- Hydraulic thumb for additional gripping function (optional)
- Hydraulic, angle dozer blade with a floating position (optional)





## Maximum efficiency: EZ36 minimal tail swing excavator.



### Optimized Drive Concept

The well thought-out drive concept with optimized engine-pump management allows quick and precise control of the excavator. Work cycles of up to 15 percent faster are possible. The powerful diesel engine features low fuel consumption and requires no exhaust aftertreatment.



### Comfortable Cab

The large, fully enclosed and tiltable cab with roof window offers the operator an optimal 360° view of the work area, as well as colleagues and any dangers on the job site. The cab can be easily disassembled for service and repair work, while maintaining all hydraulic functions of the excavator.



### Jog Dial

Familiar from the automotive industry, the jog dial system includes a clear display and allows intuitive selection of the right operating settings via push button. A keypad provides additional settings.



### Mode Selection

ECO mode is the standard for efficient and fuel-saving work. HI mode provides maximum pump performance and fast, powerful work. LOW mode delivers high accuracy for precise work.





## The boost for your construction site: ET42, EZ50, and ET58 tracked excavators.

	<b>ET42</b>	<b>EZ50</b>	<b>ET58</b>
Shipping weight (lb)	8,415-10,161	10,840-12,024	10,619-12,412
Max. digging depth (in)	139.6	144.4	158.2
Engine output (hp)	43.6	43.6	44.8

# Excavating made easy:

## ET42, EZ50, and ET58 at a glance.

### | Safety

- Active Working Signal AWS: visual warning signal for the surroundings
- LED work lights
- Ten tie-downs
- Windshield wiper motor integrated in A-pillar
- Flexible cylinder rod protection

### | Comfort

- High cab comfort with excellent ergonomics and air-conditioning system
- 7-inch display in combination with reversing camera (ET58 only)
- Radio with Bluetooth (optional)
- USB port

### | Efficiency

- Load Sensing Flow Sharing: precise control regardless of the load
- 3-point kinematics: a new level of productivity
- Compact dimensions
- Zero Tail (EZ50): working without a rear projection\*
- Guided track rollers outside



\*Counter weight adds rear projection



## | Maintenance

- Protected hose routing through the swivel console
- Optimal access to all maintenance and service points

## | Versatility

- Hydraulic quick coupler
- Hydraulic thumb (optional)
- Hydraulic angle dozer blade (optional)
- Innovative front windshield system

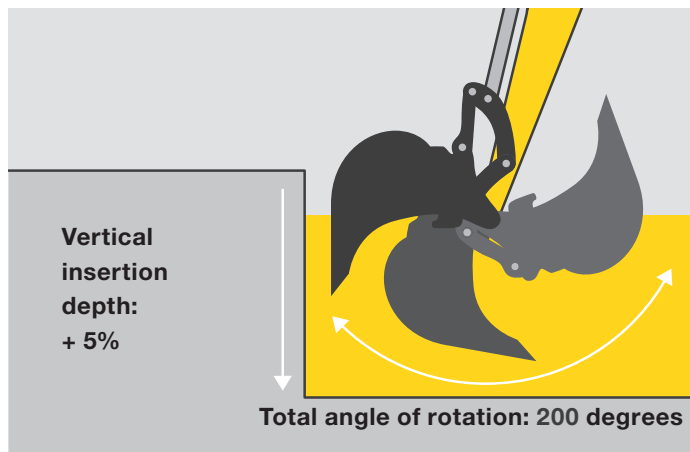
# Taking your work to a new level: ET42, EZ50, ET58 tracked excavators.



## Load Sensing Flow Sharing

Load Sensing Flow Sharing enables precise and efficient control of the excavator. The machine adjusts to the load and the joystick movements are always kept the same for the operator. The hydraulics work more efficiently, saving energy and costs, as

well as making operation easier. Load-sensing systems help to regulate the flow rate according to demand. The less power is used, the lower the fuel consumption.



## 3-point Kinematics

With 3-point kinematics, the conventional bucket linkage has been taken to a new level. This “3-bolt” design extends the bucket’s angle of rotation to 200 degrees - 10% more than conventional bucket linkage. This increases the vertical dig depth as well as the digging forces. This eliminates the need to reposition the excavator as often, significantly increasing efficiency.



## Hydraulic Quick Coupler and Diverter Valve

The hydraulic quick connect system comes standard and allows the operator to change the attachment from the cab. The diverter valve on the auxiliary hydraulic line lets the operator switch between the operational thumb and another attachment, such as a breaker, without disconnecting the hoses, saving time between tasks.



### Flexible Cylinder Rod Protection

Plastic rails protect the cylinders and the cylinder rods, which lengthens their service life and saves costs. The flexible plastic returns to its original shape after an impact, maintaining functionality and appearance.



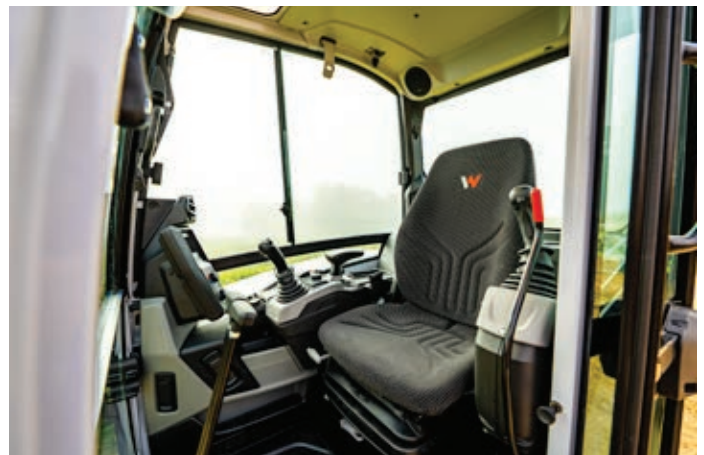
### Active Working Signal (AWS)

The red LED strip running diagonally over the engine hood lights up when the joystick control is pressed down. This signals to bystanders that the excavator is ready for operation and can be moved at any time.



### Visibility

With an offset-boom, a lower-side glass window and a sloped hood, the operator can see the front of both tracks from the seat, providing a complete view of the boom and attachment, as well as the working area. Further enhancing visibility are large windows and a lighting package that includes LED chassis and work lights.



### Comfort Cab

Inside the cab, operators will find everything they need for a comfortable day's work, including a padded seat, ergonomic grips and plenty of foot and head room. The joystick and jog dial are conveniently located and include an electronic ISO/SAE changeover switch within reach. Cab climate control includes air conditioning, as well as unique windshield design to control fresh air in the cab for ventilation and improve job site communication.

## Attachments: Quick hitch systems.



### Hydraulic Quick Coupler and Easy Lock

With the Hydraulic Quick Coupler (HQC) and Easy Lock system, the operator can change the attachment in just a few seconds with the press of a button in the cab. The HQC system is productive, comfortable and safer because the operator stays in the cab while

swapping out buckets and other tools. The versatile pin grabber design enables use of a wide range of competitive bucket sizes across the market. The coupler has the ability to reverse the bucket allowing the operator to excavate against walls and under pipes.



### Mechanical Quick Coupler

Compared to direct pin systems, the mechanical coupler offers economy and efficiency with reduced attachment change times. The simple design is user-friendly and easy to maintain.



# The right machine for every application!

## Bucket Types

Wacker Neuson offers different types of buckets for excavating, back filling, transporting, and shaking off soils or other bulk materials. To be ready for any situation there are a number of bucket options available from your local Wacker Neuson dealer.



Bucket with teeth



Ditch or trench cleaning bucket



Swivel bucket incl. hydraulic hoses and couplings



## Hydraulic Breakers

Our hydraulic breakers are ideal for demolition and renovation work. The energy recovery system offers a high level of productivity, with the output remaining constant and reliably high.



## Hydraulic Thumb

The optional hydraulic thumb kit enhances the versatility of the mini excavator by enabling the operator to grip and position objects in coordination with the bucket.

# Configurations

## Cab

	803 dualPower	EZ17	ET20	EZ26	EZ36	ET42	EZ50	ET58
Canopy	-	●	●	●	●	●	●	●
Cab	-	-	○	○	○	○	○	○
Air conditioning	-	-	-	○	○	○	○	○
Radio incl. Bluetooth hands-free system	-	-	○	○	○	○	○	○
Radio preparation incl. wiring and speakers	-	-	○	○	○	○	○	○
Rear camera	-	-	-	-	-	-	-	●
FOPS protective grating level 1	-	○	○	-	-	-	-	-
Front window protective grating	-	-	○	○	○	○	○	○
Shatter protection	○	○	○	○	○	○	○	○

## Hydraulics

	803 dualPower	EZ17	ET20	EZ26	EZ36	ET42	EZ50	ET58
Auxiliary hydraulics	●	●	●	●	●	●	●	●
Flat-faced coupler	●	●	●	●	●	●	●	●
Proportional control, AUX I	-	-	-	●	●	●	●	●
Diverter valve, thumb preparation	-	-	-	●	●	●	●	●
ISO/SAE control pattern change over valve	-	●	●	●	●	●	●	●

## Security

	803 dualPower	EZ17	ET20	EZ26	EZ36	ET42	EZ50	ET58
EquipCare Telematics (hardware)	●	●	●	●	●	●	●	●
EquipCare Telematics (subscription)	○	○	○	○	○	○	○	○
EquipCare Dual ID (keypad)	○	○	○	○	○	○	○	○

● Standard ○ Optional (editions or spare parts) - Not available

## Miscellaneous

	803 dualpower	EZ17	ET20	EZ26	EZ36	ET42	EZ50	ET58
Angle dozer blade	-	-	-	-	○	○	○	○
Auto idle	-	-	-	●	●	●	●	●
AWS (Active Working Signal)	-	-	-	-	-	●	●	●
Counterweight	-	●	●	●	●	●	●	●
Drive signal	●	●	●	●	●	●	●	●
Front and rear work lights	-	○	○	○	○	○	○	○
LED boom work lights	-	●	●	●	●	●	●	●
Long dipper stick	-	●	●	●	●	●	●	●
Outside rearview mirrors	-	○	○	○	○	○	○	○
Telescopic undercarriage	●	●	●	-	-	-	-	-

## Attachments

	803 dualpower	EZ17	ET20	EZ26	EZ36	ET42	EZ50	ET58
Mechanical Quick Coupler (MQC)	○	○	○	●	-	-	-	-
Hydraulic Quick Coupler (HQC)	-	-	-	-	●	●	●	●
Hydraulic Thumb Kit	-	○	○	○	○	○	○	○
Hydraulic Breaker Kit	○	○	○	○	○	○	○	○



# EQUIPCARE

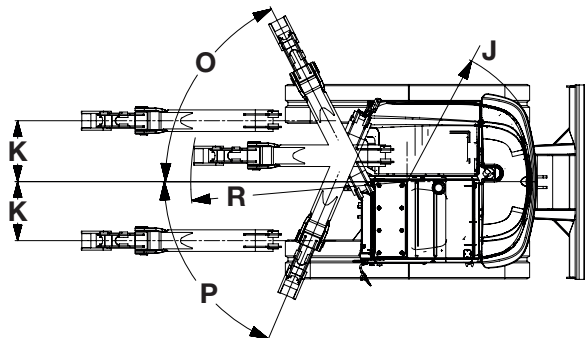
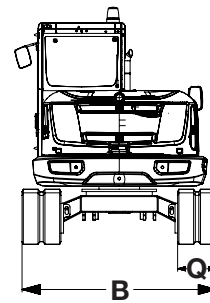
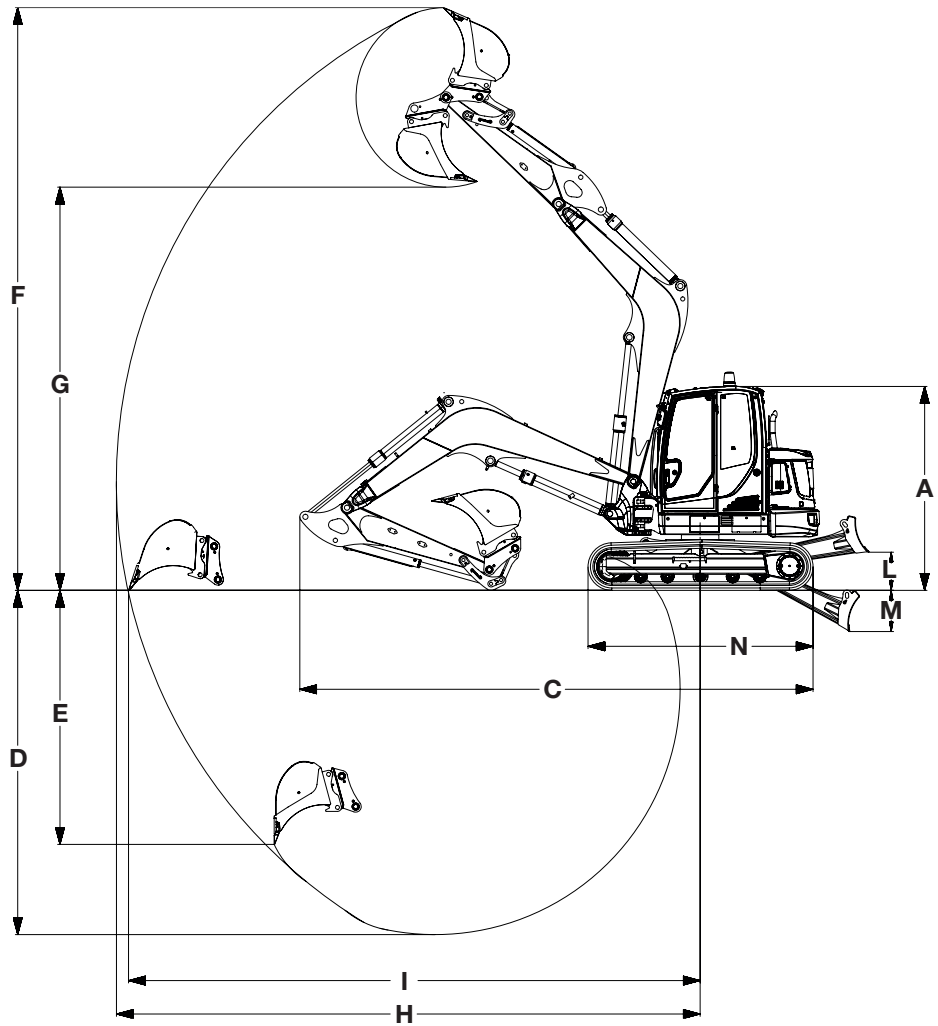
**With Equipcare your excavators are always within view.**

Our Telematics solution, EquipCare, gives your machines a voice. Machines equipped with the Telematics module actively inform you of upcoming maintenance or possible malfunctions. For these machines, our EquipCare Dual ID is also available as an option. This is an electronic access control. You can set exactly who can use your machines, increasing security on your construction site.

# Dimensions.

	Unit	803	803 dualpower	EZ17	ET20	EZ26	EZ36	ET42	
<b>A</b>	<b>Height</b>	<b>in (mm)</b>	89 (2,261)	89 (2,261)	93 (2,362)	90.4 (2,295)	95 (2,414)	98.1 (2,491)	98.2 (2,494)
<b>B</b>	<b>Width undercarriage retracted</b> (tracked/tires)	<b>in (mm)</b>	27.6 (700)	27.6 (700)	39 (990)	39 (990)	60.1 (1,526)	68.9 (1,750)	68.9 (1,750)
<b>B</b>	<b>Width undercarriage extended</b> (only telescopic transport gear)	<b>in (mm)</b>	33.9 (860)	33.9 (860)	51.2 (1,300)	51.2 (1,300)	-	-	-
<b>C</b>	<b>Transport length</b> (standard dipper stick)	<b>in (mm)</b>	111.3 (2,828)	111.42 (2,828)	141.1 (3,584)	159.4 (4,049)	165.3 (4,198)	207.4 (5,268)	202.7 (5,148)
<b>C</b>	<b>Transport length</b> (long dipper stick)	<b>in (mm)</b>	-	-	139.8 (3,551)	-	165.8 (4,211)	217 (5,503)	203 (5,156)
<b>D</b>	<b>Max. digging depth</b> (standard dipper stick)	<b>in (mm)</b>	69.5 (1,763)	69.4 (1,763)	91.6 (2,326)	97.8 (2,483)	102.5 (2,603)	127.8 (3,247)	131.7 (3,345)
<b>D</b>	<b>Max. digging depth</b> (long dipper stick)	<b>in (mm)</b>	-	-	98 (2,486)	105.6 (2,683)	110.5 (2,804)	137.6 (3,497)	139.6 (3,545)
<b>E</b>	<b>Max. vertical digging depth</b> (standard dipper stick)	<b>in (mm)</b>	52 (1,320)	52 (1,320)	67.4 (1,713)	65.4 (1,660)	44.3 (1,124)	83.6 (2,123)	83.2 (2,113)
<b>E</b>	<b>Max. vertical digging depth</b> (long dipper stick)	<b>in (mm)</b>	-	-	73.3 (1,863)	72.6 (1,845)	50.4 (1,280)	92.9 (2,360)	90.3 (2,293)
<b>F</b>	<b>Max. insertion height</b> (standard dipper stick)	<b>in (mm)</b>	112.5 (2,863)	112.5 (2,863)	136.3 (3,462)	151 (3,835)	163.4 (4,151)	194 (4,927)	205.3 (5,214)
<b>F</b>	<b>Max. insertion height</b> (long dipper stick)		-	-	140.8 (3,576)	155.9 (3,959)	168.5 (4,280)	200 (5,080)	210.4 (5,344)
<b>G</b>	<b>Max. dumping height</b> (standard dipper stick)	<b>in (mm)</b>	79.2 (2,012)	79.2 (2,012)	95.9 (2,436)	106.8 (2,713)	108.8 (2,764)	131.3 (3,336)	140.7 (3,573)
<b>G</b>	<b>Max. dumping height</b> (long dipper stick)	<b>in (mm)</b>	-	-	100.4 (2,550)	111.7 (2,836)	113.9 (2,893)	137.4 (3,489)	145.8 (3,703)
<b>H</b>	<b>Max. digging radius</b> (standard dipper stick)	<b>in (mm)</b>	121.7 (3,090)	121.7 (3,090)	153.5 (3,899)	162.6 (4,129)	182 (4,622)	208.6 (5,298)	216.3 (5,494)
<b>H</b>	<b>Max. digging radius</b> (long dipper stick)	<b>in (mm)</b>	-	-	159.4 (4,050)	170 (4,317)	189.5 (4,813)	219.8 (5,582)	223.8 (5,684)
<b>I</b>	<b>Max. reach at ground level</b> (standard dipper stick)	<b>in (mm)</b>	119.3 (3,028)	119.3 (3,028)	151.5 (3,848)	158.7 (4,031)	177.5 (4,508)	212.2 (5,391)	211.8 (5,379)
<b>I</b>	<b>Max. reach at ground level</b> (long dipper stick)	<b>in (mm)</b>	-	-	157.6 (4,002)	166.3 (4,225)	185.3 (4,706)	222.2 (5,643)	219.4 (5,570)
<b>J</b>	<b>Min. tail swing radius</b>	<b>in (mm)</b>	29.4 (747)	29.4 (747)	26.0 (660)	46 (1,169)	32.2 (818)	37 (933)	52.6 (1,336)
<b>K</b>	Max boom offset to center of bucket right	<b>in (mm)</b>	9.6 (245)	9.6 (245)	20.9 (533)	20.3 (516)	24.5 (622)	26.8 (680)	19.4 (493)
<b>K</b>	Max boom offset to center of bucket left	<b>in (mm)</b>	11.1 (283)	11.1 (283)	16.4 (418)	14.1 (359)	23 (584)	25.6 (650)	20.9 (531)
<b>L</b>	Max stacking height of dozer blade above subgrade	<b>in (mm)</b>	7.6 (194)	7.6 (194)	10.6 (271)	8.5 (216)	14.7 (373)	15.5 (393)	16.4 (416)
<b>M</b>	<b>Scraping depth</b> below ground	<b>in (mm)</b>	7 (178)	7 (178)	15.4 (390)	11.7 (297)	16.1 (409)	19.9 (505)	22.2 (563)
<b>N</b>	<b>Track length total</b>	<b>in (mm)</b>	48 (1,220)	48 (1,220)	63.3 (1,607)	67.2 (1,708)	78 (1,981)	81.24 (2,063)	86.6 (2,199)
<b>O</b>	<b>Max. boom swing angle right</b>	°	56	56	57	48	50	45	55
<b>P</b>	<b>Max. boom swing angle left</b>	°	55	55	65	77	75	70	70
<b>Q</b>	<b>Track width</b>	<b>in (mm)</b>	7.1 (180)	7.1 (180)	9.1 (230)	9.8 (249)	9.8 (249)	11.8 (300)	13.8 (350)
<b>R</b>	<b>Boom swing radius, center</b>	<b>in (mm)</b>	42.7 (1,085)	42.7 (1,085)	64.1 (1,627)	65.6 (1,666)	82.7 (2,102)	88.4 (2,245)	85.7 (2,176)

EZ50	ET58
100.6 (2,555)	100.6 (2,555)
77.2 (1,961)	77.2 (1,961)
-	-
215.4 (5,471)	214.9 (5,458)
216 (5,486)	214.5 (5,448)
136.6 (3,469)	148.3 (3,767)
144.4 (3,668)	158.2 (4,018)
82.2 (2,088)	106.7 (2,710)
89.1 (2,263)	116.3 (2,947)
215.5 (5,473)	226.5 (5,654)
220.6 (5,603)	232.5 (5,905)
144 (3,657)	158.2 (4,018)
149 (3,784)	157.4 (3,998)
233.1 (5,920)	237.9 (6,042)
242.3 (6,154)	247.3 (6,281)
228.3 (5,799)	233.3 (5,926)
235.9 (5,991)	242.9 (6,169)
41.25 (1,048)	51.7 (1,313)
30.1 (764)	21.7 (551)
30.3 (769)	22.9 (5,81)
16.2 (411)	16.3 (439)
17.45 (443)	17.3 (439)
98.8 (2,509)	98.8 (2,509)
55	55
70	70
15.7 (400)	15.7 (400)
98.7 (2,506)	94.1 (2,390)



General	Unit	803	803 dualpower	EZ17	ET20
Shipping weight*	lbs (kg)	2,182–2,396 (932–992)	2,194–2,238 (955–1,015)	3,519–4,017 (1,596–1,822)	4,105–4,810 (1,862–2,182)
Operating weight	lbs (kg)	2,268– 2,458 (1,029–1,089)	2,319– 2,451 (1,052–1,112)	3,801–4,299 (1,724–1,950)	4,420–5,125 (2,005–2,324)
Max. digging force**	lbf (kN according to ISO 6015)	1,014 (4.5)	1,012 (4.5)	2,046 (9.1)	2,810 (12.5)
Max. breakout force	lbf (kN according to ISO 6015)	2,021 (8.9)	2,001 (8.9)	4,204 (18.7)	4,226 (18.8)

Engine	Unit	803	803 dualpower	EZ17	ET20
Manufacturer	–	Yanmar	Drive either with installed diesel engine (compare 803) or electric motor in HPU8 drive unit	Yanmar	Yanmar
Model	–	3TNV74F		3TNV80F	3TNV80F
Type	–	Liquid-cooled 3-cylinder diesel engine		Liquid-cooled 3-cylinder diesel engine	Liquid-cooled 3-cylinder diesel engine
Displacement	in <sup>3</sup> (cm <sup>3</sup> )	60.6 (993)		77.3 (1,266)	77.3 (1,266)
Engine output	hp (kW)	15.5 (11.6)		17.9 (13.4)	17.9 (13.4)
Fuel tank capacity	gal (l)	1.8 (7)		5.8 (22)	6.3 (24)

Hydraulics	Unit	803	803 dualpower	EZ17	ET20
Hydraulic system/pumps	–	2 gear pumps		Load Sensing Hydraulic System/ 1 displacement pump	Double variable pump with 2 gear pumps
Max. flow rate	gal (l)/min	2.8+2.8 (10.7 + 10.7)	2.8+2.8 (10.7 + 10.7)	10.5 (39.6)	6.3+6.3+5.0+1.7 (23.8+23.8+19.1+6.5)
Operating pressure for work and drive hydraulics	psi (bar)	2,466 (170)	2,466 (170)	3,481 (240)	2,901 (200)
Operating pressure for slewing gear	psi (bar)	1,015 (70)	1,015 (70)	2,176 (150)	2,176 (150)
Auxiliary hydraulics, max. delivery rate	gal (l)/min	5.8 (22)	5.8 (22)	9.5 (36.1)	10.9 (41.5)

Travel gear	Unit	803	803 dualpower	EZ17	ET20
Ground clearance	in (mm)	5.1 (129)	5.1 (132)	6.1 (156)	6.7 (170)
Travel speed	mph (km/h)	1.1 (1.8)	1.1 (1.8)	3.0 (4.8)	2.5 (4.1)

Noise emissions	Unit	803	803 dualpower	EZ17	ET20
Sound power level (L <sub>WA</sub> )	dBA according to 2000/14/EC	93	93	93	93
Sound pressure level (L <sub>PA</sub> )	dBA according to ISO 6394	77	77	79	77

## HPU8

	LENGTH	WIDTH	HEIGHT	WEIGHT	ENGINE	PERFORMANCE	VOLTAGE	CURRENT CONSUMPTION
HPU8	36.6 in	28.3 in	39.4 in	423 lbs	3-phase electric motor	10.0 hp/ 7.5 kW	480 V	16 A

All information relates to the base machine. The right to make technical changes reserved.

\* Basic machine + 10% fuel tank capacity \*\* Short dipper \*\*\* Dipper stick blade (ISO 6015), bolted on + high power bucket.

EZ26	EZ36	ET42	EZ50	ET58
5,467–5,952 (2,480–2,700)	7,782–9,801 (3,530–4,446)	8,415–10,161 (3,817–4,609)	10,840–12,024 (4,617–5,454)	10,619–12,412 (4,817–5,630)
5,412–7,403 (2,455–3,358)	8,197–10,902 (3,718–4,945)	8,889–11,477 (4,032–5,206)	10,686–12,908 (4,847–5,855)	11,138–14,079 (5,052–6,386)
3,440 (15.3)	4,743 (21.1)	4,676 (20.8)	5,575 (24.8)	6,295 (28)
5,081 (22.5)	7,868 (35)	9,847 (43.8)***	8,272 (36.8)***	10,341 (46)***

EZ26	EZ36	ET42	EZ50	ET58
Yanmar	Yanmar	Perkins	Perkins	Perkins
3TNV80F	3TNV88F	403J-E17T	403J-E17T	403J-E17T
Liquid-cooled, 3-cylinder diesel engine	Liquid-cooled, 3-cylinder diesel engine	Liquid-cooled 3-cylinder turbo diesel engine	Liquid-cooled 3-cylinder turbo diesel engine	Liquid-cooled 3-cylinder turbo diesel engine
77.3 (1,266)	100.2 (1,642)	101.4 (1,662)	101.4 (1,662)	101.4 (1,662)
19.6 (14.6)	24.4 (18.2)	43.6 (32.5)	43.6 (32.5)	44.8 (33.5)
11.6 (44)	11.6 (44)	21.2 (80.3)	21.2 (80.3)	21.2 (80.3)

EZ26	EZ36	ET42	EZ50	ET58
Load sensing flow sharing/ 1 axial piston pump	Dual variable displacement pump, double hydraulic gear pump	Load sensing flow sharing/ 1 axial piston pump	Load sensing flow sharing/ 1 axial piston pump	Load sensing flow sharing/ 1 axial piston pump
17.4 (65.8)	11.2+11.2+6.3+3.0 (42.5+42.5+23.8+11.3)	23.8 (90)	33.3 (126)	34.9 (132)
3,481 (240)	3,481 (240)	3,553 (245)	3,553 (245)	3,844 (265)
2,843 (196)	2,828 (195)	2,988 (206)	3,031 (209)	3,031 (209)
11.9 (44.9)	17.4 (66.1)	19.5 (74)	19.2 (73)	19.8 (75)

EZ26	EZ36	ET42	EZ50	ET58
10.4 (263)	10 (251)	11.8 (300)	13 (330)	13 (330)
2.7 (4.3)	3 (4.8)	3 (4.8)	2.7 (4.3)	2.7 (4.3)

EZ26	EZ36	ET42	EZ50	ET58
93	94	97	97	97
77	78	76	77	77

HYDRAULIC PUMP DELIVERY RATE	OPERATING PRESSURE	HYDRAULIC OIL TANK CAPACITY	HYDRAULIC HOSE LENGTH
5.2 gal/min	2,756 psi	2.5 gal	39.4 ft

# Wacker Neuson – all it takes.



Concrete Technology



Compaction Equipment



Light Towers



Generators



Pumps



Heaters



Utility Track Loaders



Skid Steer / Compact Track Loaders



Excavators



Wheel Loaders



Telehandlers



Dumpers



Finance



Warranty



University



EquipCare



Genuine Spare Parts

